



Fig. 1. End-diastolic coronary centerlines. Blue: Left anterior descending coronary artery and branches, green: Circumflex artery and branches, red: right coronary artery and branches. The manikin at the right hand side depicts the viewing geometry.

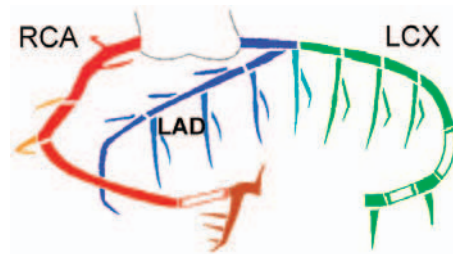


Fig. 2. Schematic view of the coronary artery system as used by the American Heart Association [5].

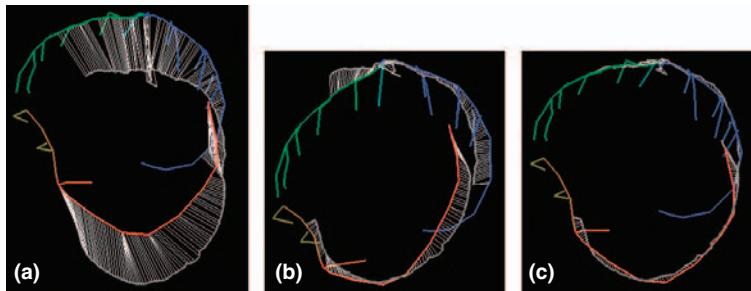


Fig. 4: Model (colored), the data centerlines (gray) and the data-point to model line correspondence (thin dark-gray lines) after (a) translating the model center to the center of the data lines and (b) rigid adaptation (c) affine adaptation.

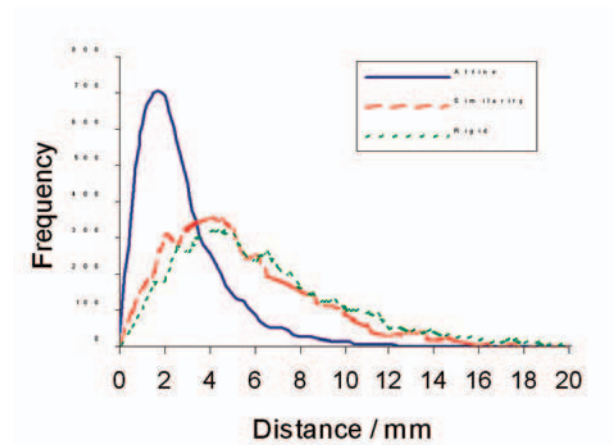


Fig. 5: Histogram of the residual data-point to model line distances after optimization.