

Figure 7. Modeling a winged Stanford Bunny: (a) the original Stanford Bunny mesh model, (b) the bounding volume which is used to extract the wings of the Victory of Samothrace mesh model in (c); the wings in (d) are then blended with the Bunny so as to obtain the final model in (e).

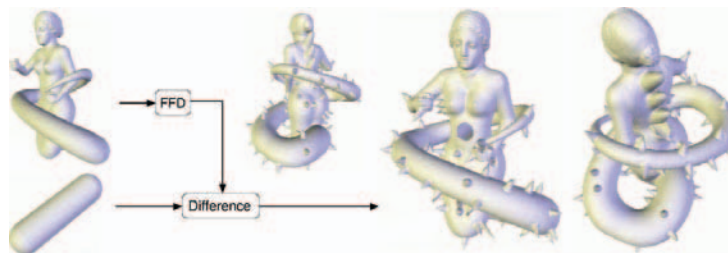


Figure 9. Free-form deformation and Boolean difference on the snake-woman (a) the snake-woman with the Igea mesh model as head; (b) result of the deformation; (c) the implicit line segment primitive subtracted from the the deformed model; (d) the final surface.

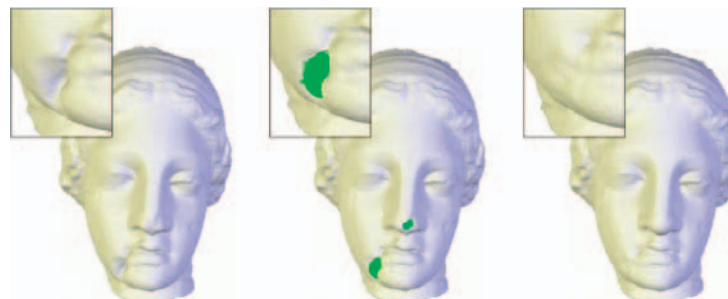


Figure 10. Virtual restoration of the Igea Greek artifact: (a) the original Igea mesh; (b) adding material; (c) partially restorized model.