

New Products

Editors: Carl Machover and Miguel Encarnação

Hardware

3D Stereoscopic Projection

Christie's has redesigned its Mirage series of projectors so that they're reportedly the first 3-chip DLP stereoscopic projectors on the market. These projectors let users combine multiple projectors on curved or flat screens and in stereo to produce 3D images. Users can also use the product's flexible image warping and processing module to project onto cylindrical, semispherical, and dome screens.

The four models of the projector (S + 2K, 4K, 8K, and 16K) offer SXGA+ resolution, as well as improved contrast (1,500 to 1,800:1 contrast ratio), brightness (2,000 to 14,000 ANSI lumens), and image quality.

Additional features include high bandwidth signal processing, faster stereo sync rates, internal scaling of stereo signals, and soft edge blending. The improved series uses a full suite of interchangeable lenses and remains compatible with previous Mirage series input modules.

For more information visit <http://www.christiedigital.com>.

High-Definition LCD Panels

Westinghouse Digital Electronics released its first line of high-definition LCD monitors for commercial application, as well as decorative art frames for LCD TVs. The monitors offer flat-panels with brighter images, higher contrast ratios, faster response times, and wider viewing angles than typical computer monitors. They're available as a 17- or 19-inch screens.

For more information visit <http://www.westinghouse.com>.



Westinghouse Digital Electronics' high-definition, flat-paneled LCD monitor

3D Graphics for Multiple Users on One Unit

Groovix is Open Sense Solutions' multiuser desktop in a single unit, offering sound and 3D graphics to each user. It has independent keyboards, mice, monitors, and speakers. The computer contains Linux software and hardware and allows up to three users at a time. The system uses simultaneous local independent multiuser technology to make one computer function as three from a user's perspective.

File sharing, Internet sharing, head-to-head gaming, and other applications that traditionally have relied on a computer network are all possible on the machine. The system uses open source software, so that users can run multiple versions of software simultaneously.

Visit <http://www.opensensesolutions.com> for more information.



Open Sense Solutions' Groovix multiuser desktop in a single unit offers sound and 3D graphics to each user

Liquid-Cooling PC

RAGE f:5 is VoodooPC's personal computer that uses liquid cooling instead of fans. The product features a new chassis design that incorporates ATX and BTX motherboard form factors. The computer has separate chambers for the liquid-cooling apparatus, hard drives, and power supply. The motherboard is inverted to promote airflow and silence.

The computer has an Nvidia nForce4 chipset, dual Nvidia SLi video cards, and an AMD Athlon 64 FX-55 central processing unit. The combination of all its technologies reportedly allows the computer to almost double the performance of PC graphics.

For more information visit <http://www.voodoopc.com>.

Home Video Editing Gets Professional

KWorld Computer announced the release of Video Magician, a hardware and software conversion sys-

tem that reportedly turns any PC (from a Pentium 3 on up) into a professional video editing station. The system includes an internal PCI card, a breakout box for audio and video connections, and software that provides the system with TiVo-type capture and viewing capabilities.

Bundled with Cyberlink's Power Director 3 and Power

VCRII software, the system offers professional-quality video editing capabilities like store, edit, enhance, titling, sound effects, music, narration, special effects, and transitions.

Visit <http://www.kworldcomputer.com> for more information.

Software

Smart, Real-Time Visual Effects

EON Professional is a software system from EON Reality that creates "smart" digitized product replicas—allowing companies to interactively and visually configure, demonstrate, and plan products. Once the digital replicas are created, companies can use the software tools to publish them either on a PC, CD, the Internet, or a stereoscopic immersive large-screen display.

Key features for the product include support for more than 120 3D/2D file formats (including Catia, UG, ProE, STEP, Microstation, Alias, and Maya); support for kinematics, mechanisms, new collision algorithms, gravity, friction, and dynamics; and a library of humans with motion and native import for the Real People format. The system also has a variety of visual effects, such as phongshading, bumpmapping, darkmapping, cubical environment maps, and nonphotorealistic hatch shading. Users also have the option to create custom materials.

For more information visit <http://www.eonreality.com>.

Fast Game Prototyping

Game Editor released version 1.2.6 of its game development software. The software can reportedly be used by novices, with little or no programming or technical knowledge required. The system lets users create a variety of game features—from shooting, side scrolling, platforms, fighting, jumping, running, puzzles, boards, and role playing.

The program can be used for fast design prototyping, letting users create and test games before committing to the final game concept. The software is portable across many platforms, including Windows, Pocket PC, and Linux.

Game Editor v. 1.2.6 costs \$199. For a free 30-day trial version, visit <http://game-editor.com>.

Recent Book of Interest

One or more members of the CG&A editorial board found the following book of interest to our readership:

Advanced Graphics Programming Using OpenGL, by Tom McReynolds (Nvidia), and David Blythe (Microsoft), Elsevier, 2005.

Automates Sequence Diagram Generation

EventHelix.com announced the release of EventStudio 2.5, a sequence diagram-based system design and architecture modeling tool that works in Microsoft Windows. When modeling with EventStudio, developers describe the interactions in the system in terms of a simple declarative modeling language. The program then analyzes the model for design errors, inconsistent operations, resource leaks, and invalid timer operations. Once the design issues have been addressed, EventStudio generates sequence and collaboration diagrams.

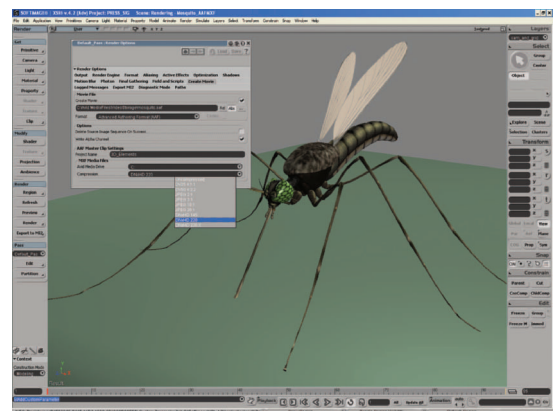
The software automatically handles diagram layout, formatting, scaling, and page breaks for diagrams generated in Adobe PDF and Microsoft Word picture formats. The program also allows the designer to generate a diagram for systems with a large number of interacting objects. For greater modularity, objects can be classified into groups and subgroups.

EventStudio 2.5 costs \$99 for an individual user, and discounts are available for multilicense packs. For more information visit <http://www.eventhelix.com>.

Simulates Crowds

Softimage|XSI 4.2 is Avid's latest release of its computer graphics software for games, films, broadcasts, and postproduction projects. The latest version of the product offers crowd simulation as well as compositing and paint capabilities. Other enhancements to the software include a more robust production pipeline, mental ray rendering, obstacle avoidance, dynamic path planning, automatic motion blending, and stunt force creation.

For more information visit <http://www.softimage.com>.



Screen shot of Avid's Softimage|XSI 4.2 user interface